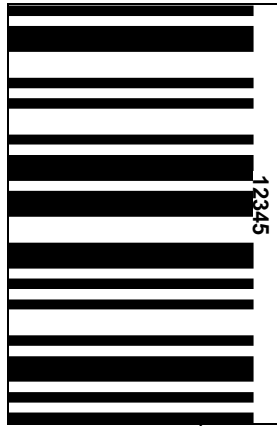
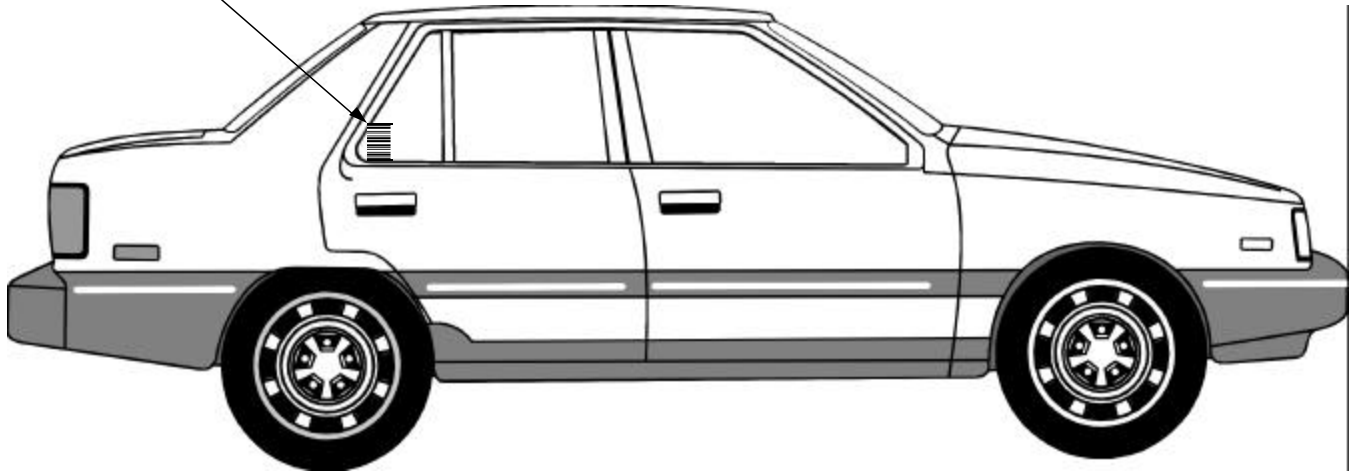


## Barcode Label Placement on Vehicles

**YES**



**NO**

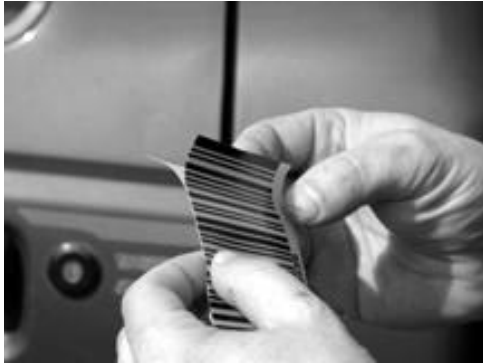


1. Always place the decals on the same side of the vehicle that the reader is on.
2. Apply to the outside of the window glass. Decals will not read reliably through the glass.
3. Orient decal with the stripes running horizontal. (as shown).
4. The bottom of the decal should be at least 36 inches above the ground.
5. The top of the decal should be no more than 65 inches above the ground.

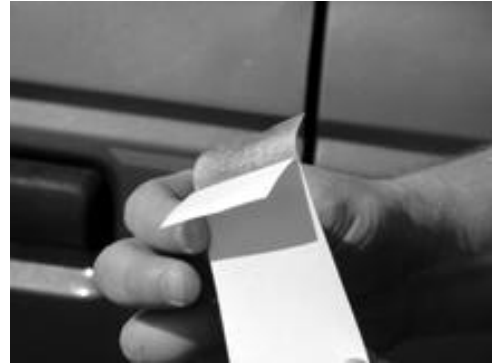
### Caution:

1. **Be sure to clean the glass using SoftScrub or other mild abrasive cleaner.** If wax and other coatings are not removed, the decal will not bond with the glass and may be easy to remove.
2. The numbers printed on the decal should be on either the left or right side, **never** the top or bottom.
3. If placed on the vehicle anywhere other than glass, it can be difficult to remove the decal without damaging the surface.

## Barcode Label Placement on Vehicles



**1. After cleaning window surface,  
Peel decal back 1 inch from backing**



**2. Bend decal backing at least  
90°**



**3. Line up decal vertically on window,  
Press firmly on top where the backing  
was peeled back.**



**4. Place squeegee at top of decal  
Press it firmly against window  
and run it smoothly downward**



**5. Hold backing with other hand**



**6. As you move the squeegee  
down, backing will come loose.**

**7. Decal is now applied.**

